

## GREAT BLAKENHAM PARISH COUNCIL - MINUTES

Minutes of Gt Blakenham Parish Council meeting held on Thursday 13<sup>th</sup> November 2025 at Parish Rooms. Present: Chair Nick Leonard, Cllr Matt Powell, Cllr Debbie Kemp, Karen Grimwood (Parish Clerk), SCC Cllr Chris Chambers and MSDC Cllr Adrienne Marriott .

1. To receive and approve any apologies for absence - Cllr Wheeler
2. Declaration of any pecuniary and non-pecuniary interests – **None**
  - a. Councillor's declaration of interest appropriate to any item on the agenda.
  - b. To receive written requests for dispensations for disclosable pecuniary interest (if any)
  - c. To grant any requests for dispensations as appropriate.
  - d. Co-option of parish councillor(s) / to sign declaration of acceptance.
3. Public Forum
  - a. To receive the report from the County Councillor - **See attached report. Cllr Chambers also confirmed that the height of the landfill sight is being investigated.**
  - b. To receive the report from the District Councillor – **See attached report.**
  - c. To receive questions from members of the public – **None**
4. To approve the Draft Minutes of the Meeting of the Council held on 9<sup>th</sup> October 2025 – **Approved**
5. To note the Clerk's update from previous Meetings.
  - a. Joint Neighbourhood plan - **All relevant parties have been advised that GBPC will not be continuing with the joint neighbourhood plan.**
  - b. Christmas Decorations – **PC agreed that as the village hall and church are arranging Christmas events and trees that PC would provide solar lights for trees in village. Clerk to action**
6. Planning
  - a. To consider the following planning applications.- **None received**
  - b. To note any planning determinations. –

DC/25/04083	59 Blueleighs Park, Chalk Hill Lane, Great Blakenham, Ipswich Suffolk IP6 0ND	Tree Preservation Order MS/141/W1 - Trim 1 No. Oak (T1) by approximately 2 - 2.5 metres  <b>NOTED</b>
-------------	---	---

7. Growth, Highways, and Infrastructure
  - a. Note B&MSC Call for sites - **Noted**
  - b. Port One Mitigations - **Cllr Marriott was asked to investigate the status of S106 obligations on the last phase of Port One. Following correspondence from Vincent Pearce, Principal Planning Officer at MSDC, councillors requested a written update on the expected delivery dates. A meeting with MSDC and Port One took place on 12 November 2025, which confirmed that most obligations had not yet progressed. Further discussions are planned, with the next meeting scheduled for 27 November 2025.**

Signed  .....

Date 21/11/2026 .....

- c. Street Lighting - The Parish Council were advised by Suffolk Highways that a street lamp on Mill Lane is no longer functioning. The unit requires full replacement at a cost of £480 + VAT. The Council agreed to proceed with the replacement.
- d. Wet Meadow - The Parish Council agreed that they would like to lease the meadow on Stowmarket Road. Although the land will not be suitable for use as allotments, securing the meadow will preserve an important green space within the village for residents and wildlife to enjoy. It was agreed that the Clerk will contact the land agent to arrange for a 20-year lease to be drafted.  
Cllr. Leonard has contacted a solicitor who will be able to review the lease prior to signing.

**8. Governance**

- a. Note Salc Audit Increase - Noted that fees will increase 2026/2027 to £342 + vat.
- b. Note new multipay card received – Noted
- c. Budget - The Parish Council approved the budget in readiness for the precept submission in January 2026. It was noted that, to ensure sufficient funds for the coming year, the precept and all other associated expenses will need to be increased by 5%. See attached report.
- d. Printer - The Clerk reported that the current office printer was not functioning correctly and requested permission to replace it with a smaller, compact model. Members agreed a budget of up to £300 for a suitable replacement, with preference given to a printer that is efficient in ink usage. The Clerk also advised that they would seek to trade in or sell the existing printer to recoup some of the cost.
- e. Note fees for financial software package 26/27 – Rialtas advised cost of 2026/2027 fees would increase to £210 + VAT

**10. Village Maintenance**

- a. Defibrillators – It was noted that the current items have expired and replacement units have been ordered.
- b. Speed Indication devices – It was noted that the speed indication devices are still not working. Cllrs will set a date to remove so that they can be sent back to the retailer

**11. Allotments**

- a. Note allotment Notice of Termination - PC have received written notice to leave the land where the current allotment is by October 2026. PC are still looking for an alternative site.
- b. Plot allocation - PC decided that any new residents wanting a plot can stay until September 2026 to ensure time to clear the site as per the written notice.

**12. Churchyard and Cemetery**

- a. Note hedge management completed. Noted

**13. Training and Development for Councillors and Clerk - None**

**14. Finance**

Signed  .....

Date 31/1/2026 .....

a. To consider approving and making the following payments – **Approved**

River Gipping Trust	Bacs	Donation towards yearly costs	£1000.00	LGA 1972 s111
Shades	Bacs	Bus Shelter, signs & notice boards as per tender 2779	£485.33	LGA 1972 s111
Shades	Bacs	Street cleaning as per tender 2778	£1213.33	LGA 1972 s111
Shades	Bacs	Grounds Maintenance as pe tender 2777	£758.33	LGA 1972 s111
Shades	Bacs	Cemetery Hedge cut as per agreed quote 2767	£1305.50	LGA 1972 s111
Nest Pension	DD	Month 7 ending 31.10.25	£53.99	LGA 1972 s111
Three (HG)	DD	Mobile phone contracts	£33.98	LGA 1972 s111
Unity Trust	DD	Bank service charge	£6.00	LGA 1972 s111
Lloyds Bank	DD	Multipay card Service charge	£3.00	LGA 1972 s111
Payroll	Bacs	Month ending 31.10.25	£1075.83	LGA 1972 s111
NSK Landscapes	Bacs	Removal of tree in churchyard as per agreed quote Inv03288	£456.00	LGA 1972 s111
Defibshop	Bacs	Defib replacement pads x 3	£252.00	LGA 1972 s111
Royal British Legion	Bacs	Wreath & Donation	£50.00	LGA 1972 s111

**Income received**

07/10/2025 – Cem Fees £50.00 - Noted

**Bank Balance @ 31.10.2025**

Unity Trust Current Account Balance -£ 46,548.96

Unity Trust Saver Account Balance - £ 164,276.49

Total - £ 210,825.45

**15. Reports:**

- a. Village Hall - **see attached report**

**16. Correspondence**

- a. Note compliment received concerning cemetery maintenance – **Noted**

**17. Future meetings**

- a. To note invitation for items to be considered in the next meeting.

**Port One Mitigations**

Signed .....  .....

Date ..... 8/11/2026 .....



**Cllr Chris Chambers**

**Gipping Valley  
Division**

[www.chrischambers.uk](http://www.chrischambers.uk)

**November 2025  
Report**



**/gippingvalleychris**

Like · Follow · Share



## Suffolk Business Board backs devolution as catalyst for growth

The letter outlines the Board's strong belief that devolution will empower local leadership, attract significant investment and drive economic growth across the region.

Suffolk's £21 billion economy is among the best-connected in the UK, home to globally recognised businesses and thousands of ambitious enterprises. The Suffolk Business Board, comprising leaders from key sectors across the region, is spearheading a new economic strategy aimed at accelerating inward investment, job creation and skills development.

The letter states:

"The ambitions and opportunities business can deliver needs the active support of a streamlined governance structure that can help create the conditions for growth. Which is why, as local business leaders, we endorse the proposal to create a Mayoral Combined County Authority across Norfolk and Suffolk – a transformative opportunity to unlock growth, give more power and decision-making authority to local people and shape a more prosperous future for our region."

The letter highlights the benefits of devolution, including local decision-making, guaranteed long-term funding and greater influence at the national level.

"Devolution means decisions made closer to home, by people who understand our local strengths, challenges and ambitions and want to help make things happen. It offers the opportunity to create high-quality jobs, attract long-term investment – including for vital improvements to infrastructure – and transform the delivery of public services in a way that reflects Suffolk's unique character and needs."

The Suffolk Business Board stresses that a directly elected mayor would provide strategic leadership and accountability to deliver on key priorities such as regenerating Ipswich, expanding clean energy innovation in East Suffolk, and growing the region's digital and technology sectors.

The letter also underscores the successful track record of collaboration between Suffolk and Norfolk, which has already attracted over £1.3 billion in investment and created and safeguarded more than 15,300 new jobs in recent years.

**Read the full letter:**

- [Open letter from the Suffolk Business Board](#)

**Chris Chambers - County Councillor for the Gipping Valley Division**

**E-mail : [chris.chambers@suffolk.gov.uk](mailto:chris.chambers@suffolk.gov.uk)**

**Mob : 07595310290**

 [/gippingvalleychris](#)

Like . Follow . Share



## Suffolk partners with Ukrainian region of Poltava

---

The Memorandum of Understanding (MoU) was signed today (15 October 2025) at the XR Lab at West Suffolk College in Bury St Edmunds by Councillor Matthew Hicks, Leader of Suffolk County Council, and Volodymyr Kohut, Head of the Poltava Administration.

The agreement strengthens ties between the two regions and establishes a framework for meaningful collaboration across a wide range of sectors, including:

- Economic development
- Education, including partnerships with agricultural and nursing colleges
- Science, technology, manufacturing and advanced engineering
- Agriculture and food production
- Arts and culture
- Renewable energy and environmental sustainability
- Healthcare
- Tourism
- Humanitarian assistance

The agreement encourages knowledge sharing, business and educational exchanges, and joint projects that foster innovation, resilience and sustainable growth. It also commits both regions to regular dialogue, visits and ongoing collaboration to ensure the partnership continues to evolve and respond to emerging needs.

The MoU will remain in effect for five years, with both parties committed to reviewing progress and exploring new areas of cooperation as the relationship develops.

Several other local authorities have made or are making similar agreements with other regions of Ukraine.

## Ofsted Focused Visit finds 'early signs of improvement' in Front Door Children's Services

---

The report, which noted 'early signs of improvement beginning to emerge' found:

- Children identified as at risk of harm receive prompt and appropriate responses with strong oversight and swift multi-agency collaboration
- Clear investment and support from the whole council for children's services

**Chris Chambers - County Councillor for the Gipping Valley Division**

**E-mail : [chris.chambers@suffolk.gov.uk](mailto:chris.chambers@suffolk.gov.uk)**

**Mob : 07595310290**

 [/gippingvalleychris](https://www.facebook.com/gippingvalleychris)

Like . Follow . Share



- High staff morale, stable workforce, strong peer and managerial support maintaining consistency for families despite leadership changes

The report also highlighted the following areas for improvement:

- Monitoring systems need to more reliably flag delays and support effective management decision-making
- More consistency in professional curiosity and threshold decisions needed
- Better recognition and response needed to patterns of concern when multiple or repeated requests are made for the same families

Since the ILACS report in August 2024, which found that the authority's children's services 'Require Improvement to be Good', Suffolk County Council's children's services have been on a transformation journey.

**Cllr Bobby Bennett, Cabinet Member for Children and Young People's Services said:**

"We welcome the report and opportunity to receive this focused visit from Ofsted. I am pleased to say that Ofsted's findings were very much as we expected. The focused visit has demonstrated that we know our service well; we know our strengths and where we are making good progress, but we also know where we need to improve.

"As with any significant transformation, we know this will take time. We are where we would expect to be at this stage of our journey, and I am confident that we are moving in the right direction."

The letter notes that leaders have 'Strengthened Oversight' of the service as a whole. This was a key area for development from the ILACS report, which is now considered a strength. The letter continues: 'Leaders have welcomed external reviews on services including the Front Door services and are acting on these findings'.

Work has also begun on an 'Integrated Front Door' for the service, which aims to provide a single, central point of contact for all children's social care and early help services.

Information about children coming into the Local Authority will be centralised to enable swift, safe and consistent decision making. These changes will enable the service to consider children's holistic needs in order to make decisions about who and how is best to provide support to them and their families.

**Cllr Bennett continues:** "We are using tried and tested methods and processes which we have seen working well in other parts of the country. The Integrated front door will not only make getting in touch easier for children, young people and their families, but it will speed up decision making and give us a fuller picture of the family, which will improve experiences and outcomes."

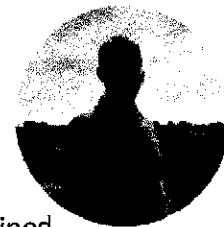
**Chris Chambers - County Councillor for the Gipping Valley Division**

E-mail : [chris.chambers@suffolk.gov.uk](mailto:chris.chambers@suffolk.gov.uk)

Mob : 07595310290

 /gippingvalleychris

Like . Follow . Share



Practice Managers from Targeted Early Help services (Family Support) have recently joined the service's Integrated Front Door, Ofsted noted that 'The recent involvement of Family Support Practice Managers in Front Door services is a strength. Their oversight promotes consistent threshold decisions and enables prompt transition to and from Early Help.'

**Read the letter from Ofsted's focused visit**

## Suffolk celebrates five years of investment in the National Cycle Network

Suffolk County Council is proud to mark five years of dedicated investment in the National Cycle Network – a key part of the county's infrastructure supporting safer, greener, and more accessible travel for all.

In that time Suffolk County Council has secured more than £5 million to enhance the network across the county.

This work has been delivered in partnership with Walk Wheel and Cycle Trust (formerly Sustrans), the national charity responsible for maintaining and developing the Network. Together, they have delivered improvements in signage, route safety, and connectivity - helping thousands of residents and visitors walk, wheel, and cycle more confidently and more often.

Key areas of improvement include routes from Ipswich Hospital to the Waterfront area, Nacton Road in Ipswich, Main Road in Martlesham, and areas within Woodbridge as part of the town's active travel project.

The Network plays a crucial role in connecting Suffolk's towns, villages, and countryside — linking historic market towns, scenic coastal paths, and rural communities. It not only offers a low-carbon transport alternative but also encourages healthier, more active lifestyles.

Looking to the future, Suffolk County Council is excited to announce proposals for two pilot Quietways - low-traffic rural routes designed to form part of the Network and provide an even more comfortable and attractive experience for people choosing active travel. These Quietways, funded by Walk Wheel Cycle Trust, via Active Travel England are currently being explored between Carlton Colville and Barnby, and Onehouse to Woolpit.

**Councillor Alexander Nicoll, Suffolk County Council Deputy Cabinet Member for Transport Strategy, said:** "We are committed to delivering a high-quality active travel network that works for every community in Suffolk.

**Chris Chambers - County Councillor for the Gipping Valley Division**  
E-mail : [chris.chambers@suffolk.gov.uk](mailto:chris.chambers@suffolk.gov.uk)  
Mob : 07595310290

 [/gippingvalleychris](https://www.facebook.com/gippingvalleychris)

Like . Follow . Share



“These schemes align with national standards and support our long-term ambitions under the Cycling and Walking Investment Strategy.

“Whether you're commuting, exercising, or simply enjoying the outdoors, we want active travel to be the easy and natural choice for everyone in Suffolk.”

**Matt Barber, Head of Growth and Partnerships at Walk Wheel Cycle Trust, said:** “We are extremely grateful for the support shown by Suffolk County Council, and we are delighted that this commitment to improving the National Cycle Network is continuing.

“We know that across Suffolk thousands of people enjoy using the Network each year, helping to improve their health, whilst cutting congestion and carbon emissions.

“However, we also know that for many the lack of safe, accessible infrastructure is the reason they cannot regularly walk, wheel, or cycle – this is why we are delighted to be piloting two Quietway projects in Suffolk; allowing us to test out low-cost interventions as we attempt to connect up more of our villages and communities.”

**Chris Chambers - County Councillor for the Gipping Valley Division**  
E-mail : [chris.chambers@suffolk.gov.uk](mailto:chris.chambers@suffolk.gov.uk)  
Mob : 07595310290

 [/gippingvalleychris](#)

Like . Follow . Share

**Train Crossing Barham**

- b. To note the date of the next scheduled Meeting on **8<sup>th</sup> January 2026** and any items for the agenda.

Date: 8<sup>th</sup> November 2025

Signed MSD  
Date 8/1/2026

## DISTRICT COUNCILLOR REPORT NOVEMBER 25

### Babergh and Mid Suffolk District Councils make listed building energy upgrades easier

A groundbreaking council initiative will help owners of Grade II listed buildings to make their homes more energy efficient. Babergh and Mid Suffolk have one of the highest numbers of listed properties in the country but these buildings often suffer from poor energy performance due to factors such as poorly fitting windows and single glazing. In the past owners had to apply to the district councils for Listed Building Consent to make upgrades. Working closely with Historic England, the councils have just introduced a new Local Listed Building Consent Order whereby

- **Secondary glazing on historic windows** - Grade II listed buildings can now have secondary glazing installed on historic windows without needing consent from the council, subject to certain conditions.
- **Replacement of windows in Grade II listed buildings** – Where original windows have already been replaced after receiving listed building consent, they can be replaced again, subject to conditions.
- **Replacement of an existing window in a modern extension to a listed building** - Windows in Grade II listed buildings can be replaced, or have secondary glazing installed, if they have previously received listed building consent, subject to conditions.

### Community Governance Review

Mid Suffolk District Council has launched a district-wide Community Governance Review (CGR) to consider changes to parish arrangements for effective future governance. The review is currently in its initial consultation phase, with public representations being accepted until **Friday, January 23, 2026**. Residents can submit their comments by email to [cgr@baberghmidsuffolk.gov.uk](mailto:cgr@baberghmidsuffolk.gov.uk) or by writing to the Community Governance Review team at Endeavour House, 8 Russell Road, Ipswich, IP1 2BX, as outlined on the Mid Suffolk website.

<https://www.midsuffolk.gov.uk/community-governance-review>

### About the review

- **Purpose:** To examine and update parish arrangements, potentially including creating, merging, or altering parishes, and considering electoral arrangements and other local arrangements.
- **Legal basis:** The review is a legal process to ensure community governance reflects local identities and interests and is effective and convenient.

The Food Standards Agency is sharing a toolkit of assets for its ongoing campaigns, with a focus on keeping safe this Christmas:

<https://brandhub.food.gov.uk/share/F7spcosTG5xaTE21dqJm/folders/1108>

These campaigns are an extension of the successful 'Bacteria Love It Here' consumer campaign and 'Safer Food Means Better Business' campaign, aimed at small and micro food businesses.

These campaigns aim to support both businesses and consumers with the food safety challenges which Christmas brings. We are sharing vital food safety messages in the run up to and throughout the festive season.

Councils are asked to share this toolkit with stakeholders.

---

### **Warning: Dangerous Baby Self-Feeding Products**

The Office for Product Safety and Standards has issued a renewed warning about baby self-feeding products:

<https://www.gov.uk/government/news/warning-of-new-variant-of-dangerous-baby-self-feeding-products>

including a new variant shaped like animal heads. These products pose a serious risk of harm or death due to choking or aspiration pneumonia.

All baby self-feeding products are considered unsafe. The public is urged to stop using them immediately and dispose of them safely.

### **Housing measures introduced to protect poultry and other captive birds**

On 28 October the Department for Environment, Food and Rural Affairs (DEFRA) introduced mandatory housing measures for poultry and captive birds due to rising cases of avian influenza.

## **Call for evidence: Reforming the licensing system**

On 9 October, the government launched a fast-track review of the licensing rules applicable to pubs, bars and local events and want to hear from councils, landlords, customers and communities.

<https://www.gov.uk/government/news/cheers-to-change-red-tape-review-could-bring-more-food-music-and-fun-to-your-local>

The call for evidence will focus on nine key recommendations from the government's Licensing Taskforce, with particular emphasis on streamlining on-trade alcohol licensing for hospitality venues.

The four-week call for evidence is giving people the opportunity to share their views. The deadline to submit evidence is midday on 6 November.

## **New approach to environmental regulation to support new homes drive**

On 27<sup>th</sup> October the government announced changes to environmental permitting. The Environment Agency will be empowered to consider which activities should be exempt from requiring an environmental permit.

Currently, certain activities which are vital for the early stages of construction projects – such as site investigation works, the storage of waste materials and drainage operations – are required to acquire environmental permits before they can begin. The government however consider that any of these activities pose only minimal risk.

They say that projects such as solar and onshore windfarms that do not require ongoing operational permits, will be able to be constructed without the need for any environmental permits where the right conditions apply. For example, an onshore wind farm that might currently require a permit covering multiple activities such as channelling and discharge of uncontaminated water (e.g. rainwater), storage of inert waste materials, preparing platforms for cranes and the installation of temporary floodwater barriers, may not require any permit at all if it meets the appropriate controls and conditions needed to uphold environmental protections.

The reforms will give renters the right to end tenancies with two months' notice, while protecting landlord interests through strengthened repossession grounds that support continued investment in the sector.

Further details of implementation plans will be communicated in the coming weeks. Ministers will also outline how the reforms will be rolled out.

New guidance has also been published on investigatory powers for local housing authorities which will commence two months following Royal Assent. Further local council enforcement guidance will be published shortly.

### **Applications for the Social Housing Innovation Fund now open**

On 27th October, the Ministry of Housing, Communities and Local Government launched the Social Housing Innovation Fund, offering up to £1 million in grant funding to support projects that improve tenant engagement and strengthen residents' voices:

<https://www.gov.uk/government/publications/investigatory-powers-guidance-for-renters-rights-act-2025>

Councils, social landlords, tenant groups and other eligible organisations can apply for grants of £60,000 to £100,000 to test innovative approaches that give tenants more influence over decisions affecting their homes. All proposals must be co-produced with tenants and demonstrate potential to be scaled across the sector.

The fund aims to support projects that challenge conventional practices and improve outcomes for underrepresented tenant groups. Applications close on 9 January 2026, with funding awarded in February 2026. For further enquiries, please contact [socialhousinginnovationfund@communities.gov.uk](mailto:socialhousinginnovationfund@communities.gov.uk)

### **Regulator of Social Housing publishes annual stocks and rent sector statistics**

On 28 October, the Regulator of Social Housing published its annual statistics on social housing stock and rents in England.

Key figures include:



## Public Information Drop-In Session

Members of the Port One Development Team will be available to answer questions, discuss queries and listen to the concerns regarding the recent Port One outline planning application.

Wednesday 14<sup>th</sup> January – Great Blakenham Village Hall (11am – 7pm)

For Residents of Great Blakenham

Monday 12<sup>th</sup> January – Little Blakenham Village Hall (11am – 7pm)

Tuesday 13<sup>th</sup> January – Claydon & Barham Community Centre (11am – 7pm)



# Survey -Port One Development – DC/25/05114

## 1. Resident location

### Where do you live?

- Great Blakenham village
- Nearby village (please specify): \_\_\_\_\_
- Outside the immediate area

### If nearby village, how often do you travel through Great Blakenham?

- Daily
- Several times a week
- Occasionally
- Rarely

## 2. Overall concern

### How concerned are you about the Port One Development?

- Very concerned
- Quite concerned
- Neutral
- Slightly concerned
- Not concerned

## 3. Main areas of concern

### How concerned are you about the following issues?

(1 = Not concerned, 5 = Extremely concerned)

Issue	1	2	3	4	5
Traffic levels & congestion	<input type="checkbox"/>	<input type="checkbox"/>	<input type="checkbox"/>	<input type="checkbox"/>	<input type="checkbox"/>
HGV movements through the village	<input type="checkbox"/>	<input type="checkbox"/>	<input type="checkbox"/>	<input type="checkbox"/>	<input type="checkbox"/>
Road safety (junctions, pedestrians, cyclists)	<input type="checkbox"/>	<input type="checkbox"/>	<input type="checkbox"/>	<input type="checkbox"/>	<input type="checkbox"/>
Noise (daytime & night-time)	<input type="checkbox"/>	<input type="checkbox"/>	<input type="checkbox"/>	<input type="checkbox"/>	<input type="checkbox"/>
Light pollution	<input type="checkbox"/>	<input type="checkbox"/>	<input type="checkbox"/>	<input type="checkbox"/>	<input type="checkbox"/>
Impact on wildlife & habitats	<input type="checkbox"/>	<input type="checkbox"/>	<input type="checkbox"/>	<input type="checkbox"/>	<input type="checkbox"/>
Air quality	<input type="checkbox"/>	<input type="checkbox"/>	<input type="checkbox"/>	<input type="checkbox"/>	<input type="checkbox"/>
Drainage & flood risk	<input type="checkbox"/>	<input type="checkbox"/>	<input type="checkbox"/>	<input type="checkbox"/>	<input type="checkbox"/>
Pressure on local roads & infrastructure	<input type="checkbox"/>	<input type="checkbox"/>	<input type="checkbox"/>	<input type="checkbox"/>	<input type="checkbox"/>
Impact on village character	<input type="checkbox"/>	<input type="checkbox"/>	<input type="checkbox"/>	<input type="checkbox"/>	<input type="checkbox"/>